



MANAKAU SCHOOL Matters...

November 25, 2020 Term 4, Week 7

Upcoming Events

Thursday November 26

- Room 4 sleepover

Tuesday December 1

- County Fair de-brief 6.30pm in the staffroom
- Regional Athletics

Thursday December 3

- Speech Finals * **Please note change of day**

Friday December 4

- Huia opening at 11am

Friday December 11

- House Challenge

Thursday December 17

- Last day of school for 2020. Finish at 12noon



Country Fair thank you

I'd like to take this opportunity to thank all who were involved in organising our successful Country Fair. Roger, Lisa, Jill, Mel, Michelle, Amy and Lucy as the PTFA put in a lot of time to ensure we were ready on the day and packed up after the event. We are still finalising the expenses however nearly \$9000 was raised in 4 hours. A great effort. To those of you who manned the stalls, or provided resources and vouchers, thank you. It really is a team effort and I would also like to acknowledge the extended whanau who support us at this event. Personal Best Always!

Te Whare Huia Opening - Friday 4th December

As many of you are aware, Manakau School has been very lucky to have had the opportunity to fully restore our magnificent school building. Manakau School was established in 1888 and the "Old Block" soon to be renamed Te Whare Huia will be a testament to the history of our space. A fully restored learning space, tongue and groove walls, kauri washstand, and awesome workmanship. It includes all that a modern learning space needs in regards to acoustics, lighting and heating, while respectfully embracing the heritage status that the building deserves. It really is beautiful. This is a project we can be very proud of and is an asset for future generations to enjoy.

This is an open invitation to join us on Friday 4th December at 11am to formally reopen this facility. We ask that you bring a plate of food to share, as light refreshments will be served following the ceremony.

The children will be having a BBQ lunch supplied by the PTFA on this day.

Kapiti Athletics

Last week a team of students attended the Kapiti Regional Athletics. A massive congratulations to our 4 students who have qualified to represent the Kapiti Zone at the Wellington Regional athletics champs. Manakau School is contributing 10% of the team and this is quite a disproportionate number based on the number of children at the qualifiers, in particular those from massive schools vs our small school. Congratulations to: Arnyah - nerf throw, Riley - nerf throw (extending school record), Sam - Long jump (extending school record), Paisley - 100m, 200m, long jump, high jump, nerf throw, discus, relay (extending school records in long and high jumps). - Lorne

**The main function of the
little toe on your foot is to
make sure that all the
furniture in the house
is in place.**



A huge thank you to...



*And
Manakau Market*

*And
Manakau Store*

*For supporting our school gala.
Please support business's that
support us.*



As a school we are participating in the **Switch to Water Challenge** for all of November. We are asking you to help by filling drink bottles with water and no sweat drinks please.



Gala Silent Auctions

Coffee Machine

(Used) DeLonghi MagnificaS Bean to cup espresso and cappuccino machine (including instruction manual).

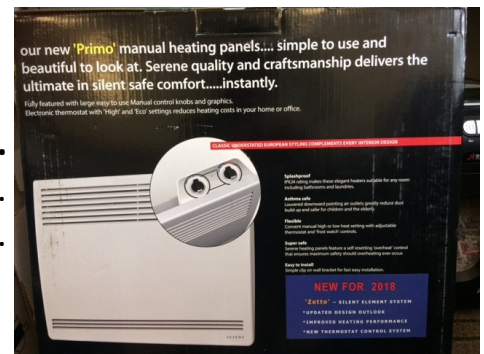


Bathroom Fan Heater

Classic 'step down' bathroom heater. Needs to be wired in. Perfect for smaller bathrooms and ensuites. New, in box valued at \$169.

Serene Primo 1kw Panel Heater.

Plugs into a standard power point. New, in box valued at \$209.



Bellini Dishwasher.

New in box.

Bellini 60cm Slimline Rangehood.

New in box.



There are forms for the above auctions in the school office.
These will close next Friday December 4th.

COMMUNITY NOTICEBOARD



Gel nail manicure \$40
including feature nails.
Contact Mel 021 457 484



Do you know anyone born overseas who wants to improve their English?

Talk to us now about classes for next year.

We offer ...

One-to-one help (1-2 hours a week)

Classes in Levin (2 hours a week)

Classes in person or online

Speaking, Listening, Reading, Writing

All levels (beginners to advanced)

Our tuition is ...

For new arrivals and those who have lived in New Zealand for years

FREE for permanent residents (for other visa holders charges apply)

To contact English Language Partners phone 0800 NEW KIWI or 0800 639 5494

horowhenua-kapiti@englishlanguage.org.nz or visit us at HLC campus, 102 Liverpool St, Levin

EFKS LEVIN YOUTH ISLAND CUISINE THE WORKS \$15
PRE-ORDER YOUR MEAL NOW! CASH + ONLINE PAYMENTS AVAILABLE

CHOP SUEY
POTATO SALAD
DRY BEEF VEGETABLE CURRY
BBQ - CHICKEN NIBBLES + SAUSAGE
OKA - RAW FISH IN COCONUT CREAM
GREEN SALAD
DRINK

Door Sales for this menu will also be available on the night of the concert, Saturday 5 December 2020 @7PM Levin Memorial Hall.

PickUp: Saturday 5th December 2020 From 6PM @Levin Memorial Hall Chamberlain Street
Bank Payments to: 03 0667 0250243 25 Reference: "YUM" + your name

PRE-ORDER PAYMENTS DUE THURSDAY 3 DECEMBER 2020
If you need delivery please contact us ASAP
Contact Noa - 022 317 9410 or Email: efkslevinyouth@gmail.com

Christmas Trees

We are students from Otaki College and Manakau School. We are selling amazing quality, real Christmas trees.

Prices start from \$40 to \$80 size dependant. We will be selling from the Manakau Domain off Wai-kawa Beach Road.

5th and 6th December,
12th 13th December, 19 and
20th December. From 9am -
1pm. Reservations availa-
ble. Text me on
0224285719.



Summer Reading Programme

There are two separate programmes. One for children up to 6 years and the iRead programme for children in years 7&8. The programmes aim to encourage and promote books. Libraries, and the fun of reading, through incentive awards, activities and storytellers. All of this is offered free of charge. Register at a Horowhenua Library now.

