

Upcoming Events

Thursday December 3

- Regional Athletics postponement date

Thursday December 3

- Speech Finals at 11.15am

Friday December 4

- Huia opening at 11am

Friday December 11

- House Challenge
- Final Assembly

Tuesday December 15

- Awards Assembly

Thursday December 17

- Last day of school for 2020.
- Finish at 12 noon

Monday February 1

- First day back at school for 2021

Board of Trustees (BOT)

We still have one vacancy which the BOT has decided to appoint by selection. If, however, 10% of Manakau School parent community would like to go to election, then an election, will take place. The cut off day for this is December 30, 2020.

A huge thank you to...

*Nathan from
The Garden Depot
In Levin*

And

*BEN CARSON FROM
CARSON ENGINEERING
IN OTAKI*

***for supporting our school gala.
Please support business's that
support us.***

Te Whare Huia Opening - Friday 4th December

Manakau School was established in 1888 and the "Old Block" soon to be renamed Te Whare Huia will be a testament to the history of our space. A fully restored learning space, tongue and groove walls, kauri washstand, and awesome workmanship. It includes all that a modern learning space needs in regards to acoustics, lighting and heating, while respectfully embracing the heritage status that the building deserves. It really is beautiful. This is a project we can be very proud of and is an asset for future generations to enjoy.



This is an open invitation to join us on Friday 4th December at 11am to formally reopen this facility. We ask that you bring a plate of food to share, as light refreshments will be served following the ceremony.

The children will be having a BBQ lunch supplied by the PTFA on this day.

Otaki Food Bank

We currently have a container in reception for the Otaki Foodbank. All donations are gratefully accepted. Due to one of our senior students doing a speech on poverty, they wanted to make available a resource to be able to help others around Christmas. No donation is too big or too small. This box will be delivered to the Foodbank on the 15th of December.

Wanted: Girls 20" bike in good condition. Please contact the office.

Free to a good home:

1 Entre male Farny Brown rabbit. Please contact the office if interested.

Wellington Zoo - Holiday Programme

Looking for something for the kids to do in the summer holidays? Be a Vet for the Day or maybe a Zoo Keeper Apprentice.

Our Zoo Holiday Programme for 5-12-year olds will be running from 17th – 23rd December and 18th – 29th January (excluding weekends).

Be assured we operate with additional level-appropriate hygiene procedures, to ensure your child's safety.

The **Horowhenua Community Music Workshop (HCMW)** offers a wide range of musical tuition to choose from; keyboard, guitar, bass, violin, ukulele, drums, flute, clarinet and recorder. 10 weeks for \$10. Registrations can for 2021 be done online www.musicworkshop.homedns.org or by phoning Rona Cooper 06 3682510.



The Parenting Place NZ

There is a great article about How to talk about the Christmas List.

..This is really a conversation about perspective and guiding our kids to live gratefully in a culture of consumerism that relentlessly tells them they need more.

- What do we really need to make Christmas awesome?
- Strategic shopping. The limit of four things has helped navigate the overwhelming temptation of Christmas marketing.

This is a great article for both adults and children.



Te Whare Mahana Community Hub

Telephone (06) 368 1195

Email: info@tewharemahana.org

32 Bristol Street, Levin
(Behind RSA carpark)

Repair Café

Don't toss it -FIX IT!

SAVE COSTS, REDUCE WASTE, REUSE,
LEARN NEW SKILLS
and meet others over a cuppa

SATURDAY NOVEMBER 7th

10.00am - 1.00 pm

32 Bristol St, Levin (next to RSA)

**First Saturday of each month (except
January)**

Bring along any small broken or damaged item that can be fixed on the spot by local volunteer repairers for a small koha.

We encourage you to bring along children's bikes, scooter, skateboards, and toys to be repaired in preparation for the summer holidays, along with any household and garden items,

Including: electrical items, jewellery; leather goods; small items of furniture; broken ornaments and tools, clothing: re-sewing hems, replacing buttons, mending tears, darning, and mending knitwear, Computers, and devices etc.

If you're interested in supporting the Repair Café or want more information come and check us out or contact us.

Gala Silent Auctions

Coffee Machine

(Used) DeLonghi MagnificaS Bean to cup espresso and cappuccino machine (including instruction manual).

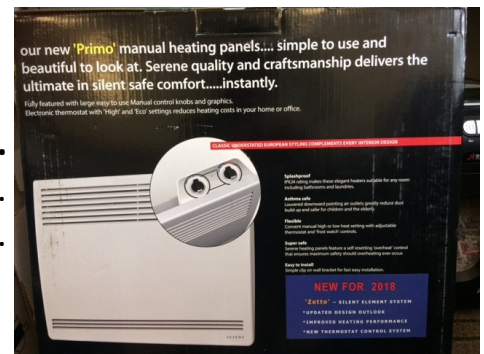


Bathroom Fan Heater

Classic 'step down' bathroom heater. Needs to be wired in. Perfect for smaller bathrooms and ensuites. New, in box valued at \$169.

Serene Primo 1kw Panel Heater.

Plugs into a standard power point. New, in box valued at \$209.



Bellini Dishwasher.

New in box.

Bellini 60cm Slim line Range hood.

New in box.



There are forms for the above auctions in the school office.
These will close next Friday December 4th.

COMMUNITY NOTICEBOARD



Gel nail manicure \$40
including feature nails.
Contact Mel 021 457 484



Working with Migrants and Refugees

Do you know anyone born overseas who wants to improve their English?

Talk to us now about classes for next year.

We offer ...

One-to-one help (1-2 hours a week)

Classes in Levin (2 hours a week)

Classes in person or online

Speaking, Listening, Reading, Writing

All levels (beginners to advanced)

Our tuition is ...

For new arrivals and those who have lived in New Zealand for years

FREE for permanent residents (for other visa holders charges apply)

To contact English Language Partners phone 0800 NEW KIWI or 0800 639 5494

horowhenua-kapiti@englishlanguage.org.nz or visit us at HLC campus, 102 Liverpool St, Levin

EFKS LEVIN YOUTH ISLAND CUISINE THE WORKS \$15
PRE-ORDER YOUR MEAL NOW! CASH + ONLINE PAYMENTS AVAILABLE

CHOP SUEY POTATO SALAD DRY BEEF VEGETABLE CURRY BBQ - CHICKEN NIBBLES + SAUSAGE OKA - RAW FISH IN COCONUT CREAM GREEN SALAD DRINK	Door Sales for this menu will also be available on the night of the concert, Saturday 5 December 2020 @7PM Levin Memorial Hall.
---	---

PickUp: Saturday 5th December 2020 From 6PM @Levin Memorial Hall Chamberlain Street
Bank Payments to: 03 0667 0250243 25 Reference: "YUM" + your name

PRE-ORDER PAYMENTS DUE THURSDAY 3 DECEMBER 2020
If you need delivery please contact us ASAP
Contact Noa - 022 317 9410 or Email: efkslevinyouth@gmail.com

Christmas Trees

We are students from Otaki College and Manakau School. We are selling amazing quality, real Christmas trees.

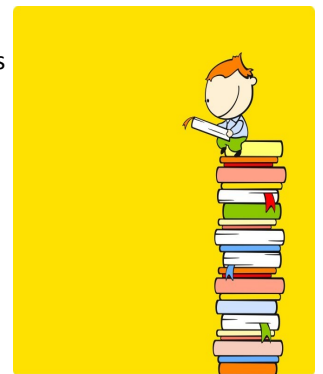
Prices start from \$40 to \$80 size dependant. We will be selling from the Manakau Domain off Waikawa Beach Road.

5th and 6th December, 12th and 13th December, 19 and 20th December. From 9am - 1pm. Reservations available. Text me on 0224285719.



Summer Reading Programme

There are two separate programmes. One for children up to 6 years and the iRead programme for children in years 7&8. The programmes aim to encourage and promote books. Libraries, and the fun of reading, through incentive awards, activities and storytellers. All of this is offered free of charge. Register at a Horowhenua Library now.



You can tell a lot about a person by how they handle slow internet and tangled Christmas lights.

